



THRIVE INDIANAPOLIS

INDY'S PLAN FOR COMMUNITY RESILIENCE + SUSTAINABILITY

a resilient Indianapolis is better able to anticipate, adapt and flourish in the face of change

a sustainable Indianapolis provides equitable services and supports inclusive, healthy and happy neighborhoods

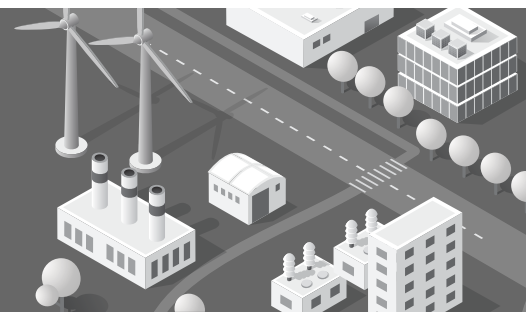


ENERGY

VISION: Energy comes from clean, renewable sources that are affordable for and accessible to all members of our community

WHAT DOES IT INCLUDE?

- The sources we use to generate energy for our homes, businesses and industries
- Backup energy sources, like microgrids, to increase resiliency
- Efficiency programs that reduce costs and energy use



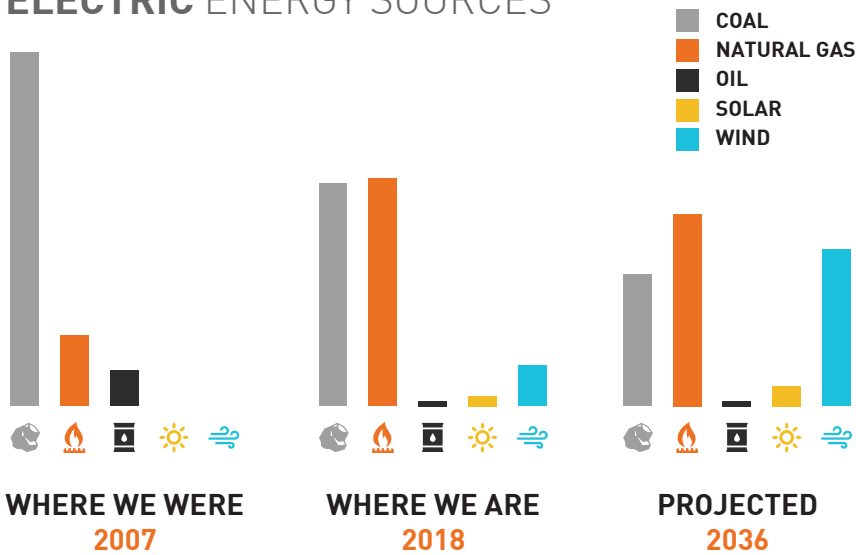
WAYS OTHER COMMUNITIES CONNECT IT TO THEIR LONG-TERM RESILIENCE AND SUSTAINABILITY

- Promoting the use of renewable energy to improve air quality and reduce greenhouse gas emissions
- Implementing efficiency programs to help residents and businesses save money
- Installing microgrids to provide local backup generation in the case of emergencies

INVESTMENTS IN ENERGY =



ELECTRIC ENERGY SOURCES



microgrid *(noun)*

"a microgrid is a self-contained power system confined to a small geographic area"

ALL DATA SOURCES CAN BE FOUND AT WWW.THRIVEINDIANAPOLIS.COM

RENEWABLE ENERGY

Indianapolis has the 4th highest solar per capita of 20 major cities with 36 operating solar farms

VOICE YOUR OPINION ON WHAT ENERGY ACTIONS WE SHOULD TAKE AS A PART OF #THRIVEINDIANAPOLIS

WHAT WE'RE HEARING:

- Launch an energy efficiency challenge for businesses
- Require municipal buildings to supply 50% of their energy from renewable sources
- Establish a regional program that helps low-income households install or access solar power
- Investigate ways to ensure that renovations of existing buildings meet a minimum level of energy efficiency
- Identify optimal locations for microgrids

LEARN MORE AT THRIVEINDIANAPOLIS.COM