



THRIVEINDIANAPOLIS

INDY'S PLAN FOR COMMUNITY RESILIENCE + SUSTAINABILITY

a resilient Indianapolis is better able to anticipate, adapt and flourish in the face of change

a sustainable Indianapolis provides equitable services and supports inclusive, healthy and happy neighborhoods

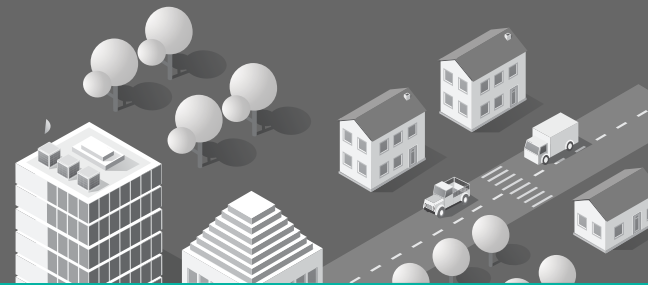


TRANSPORTATION & LAND USE

VISION: Transportation & Land Use are connected systems that focus on equitable accessibility to multiple modes of transportation and development that creates active living spaces that are affordable, multi-use and foster inclusive neighborhoods

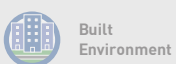
WHAT DOES IT INCLUDE?

- Our network of roads, trails, greenways, bike paths, bus routes and sidewalks
- The guidance and policies for how we develop and redevelop our land



WAYS OTHER COMMUNITIES CONNECT IT TO THEIR LONG-TERM RESILIENCE AND SUSTAINABILITY

- Reducing the use of gasoline and other fossil fuels to power vehicles to improve air quality and lessen impact on climate change
- Locating and designing new development in a way that allows for multiple modes of transportation to improve how residents live, work and play
- Ensuring neighborhoods are connected to regional economic hubs through bike and walk ways to promote cleaner and more convenient



Built Environment



Economy



Energy



Food + Urban Agriculture



Natural Resources



Public Health + Safety



Transportation + Land Use



Waste + Recycling

INVESTMENTS IN TRANSPORTATION & LAND USE =

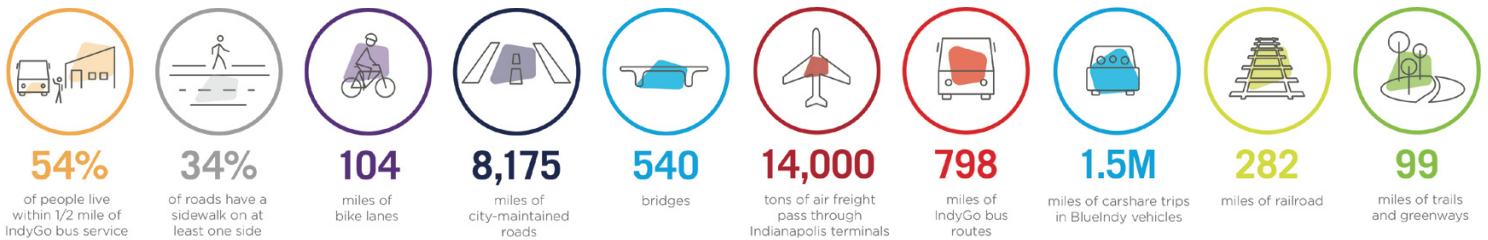
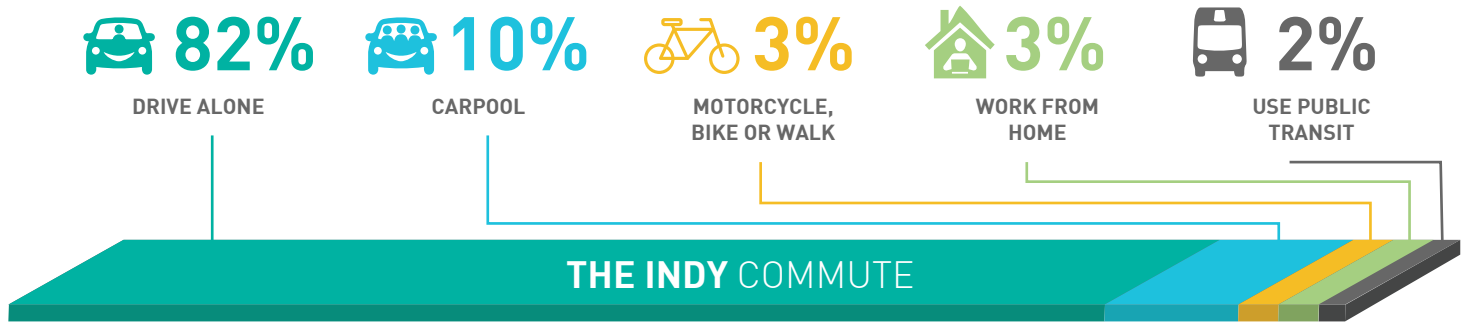


INCREASE

- CLEAN AIR
- PHYSICAL AND MENTAL HEALTH
- CONNECTED COMMUNITY

DECREASE

- HOUSEHOLD TRANSIT COSTS
- ENERGY CONSUMPTION
- GREENHOUSE GAS EMISSIONS



ALL DATA SOURCES CAN BE FOUND AT WWW.THRIVEINDIANAPOLIS.COM

VOICE YOUR OPINION ON WHAT TRANSPORTATION & LAND USE ACTIONS WE SHOULD TAKE AS A PART OF #THRIVEINDIANAPOLIS

WHAT WE'RE HEARING:

- Improve infrastructure like sidewalks, greenways and bike lanes
- Prioritize smart, mixed-use and transit-oriented development
- Create more easily accessible bus stops
- Identify potential pedestrian-only corridors
- Pilot reduced pricing system and subsidies for students, elderly and low-income residents

LEARN MORE AT THRIVEINDIANAPOLIS.COM